

# Incoming President's Address

Andrew SC Rice



**IASP 2024 WORLD  
CONGRESS ON PAIN**

Amsterdam, Netherlands • 5-9 August

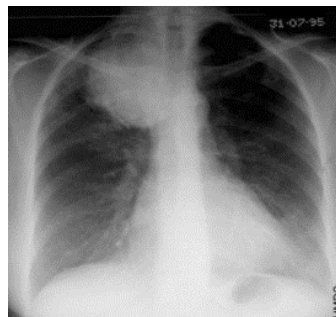
**#WC2024**

# Declaration of Interests

- Employee of Imperial College London
- Consultancy for Imperial Consultants, last 24 months - Pharmanovo, Combigene, Confo & Astra Zeneca
- Medicines and Healthcare products Regulatory Agency (MHRA), Commission on Human Medicines - Neurology, Pain & Psychiatry Expert Advisory Group – until 2024
- Joint Committee on Vaccine and Immunisation; varicella sub-committee - until 2024
- Non-Freezing Cold Injury Independent Senior Advisory Committee
- Grant funding: UKRI(MRC); Versus Arthritis; Ministry of Defence; Allan and Sheila Diamond Trust; Jenny Gwynn Bequest; European Commission

# Andrew's Journey with IASP

- Met a patient with a Pancoast tumour
- “Mac” Steve McMahon (PAIN 2022;163:403-405)
- Clinical pain training St Thomas’ Hosp & Oxford



- IASP member since 1988
- First World Congress, Adelaide 1990

- British Pain Society
- NeuPSIG



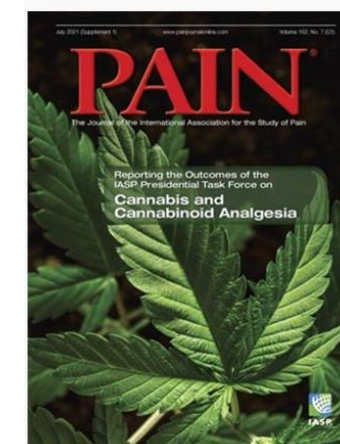
THE BRITISH  
PAIN SOCIETY  
EXPERTISE WHERE IT MATTERS



- IASP Councilor 2016-22
- 18th World Congress on Pain, SPC Chair
- IASP Cannabis Presidential Task Force, Chair
- Federation liaison – South East and South Asia



- Pain - Associate Editor
- Pain Clinical Updates - Editor in Chief
- Pain Reports - Associate Editor





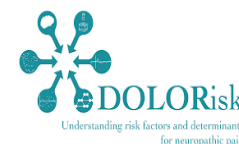
# What Does Andrew Do?

- Professor of Pain Research, Imperial College London
- (Hon Consultant, Pain Medicine, Chelsea & Westminster Hospital)
- Clinical academic with interest in neuropathic pain
- Translational research esp in context of:
  - Infection (HIV, Leprosy, HTLV-1 & H Zoster)
  - Diabetic and other polyneuropathies
  - Conflict related nerve trauma/amputation & NFCI
- Multidisciplinary research group currently focused on:
  - Enhancing validity, rigour and reproducibility in preclinical science
  - Preclinical evidence synthesis
  - Deep profiling of clinical cohorts - precision medicine
  - Clinical evidence – trials, methods and synthesis
  - History



# What Does Andrew Do?

- Professor of Pain Research, Imperial College London
- (Hon Consultant, Pain Medicine, Chelsea & Westminster Hospital)
- Clinical academic with interest in neuropathic pain
- Translational research esp in context of:
  - Infection (HIV, Leprosy, HTLV-1 & H Zoster)
  - Diabetic and other polyneuropathies
  - Conflict related nerve trauma/amputation & NFCI
- Multidisciplinary research group currently focused on:
  - Enhancing validity, rigour and reproducibility in preclinical science
  - Preclinical evidence synthesis
  - Deep profiling of clinical cohorts - precision medicine
  - Clinical evidence – trials, methods and synthesis
  - History
- Advocate of interdisciplinary collaborative research



Bennett



MacLeod



Sena



# Thank You



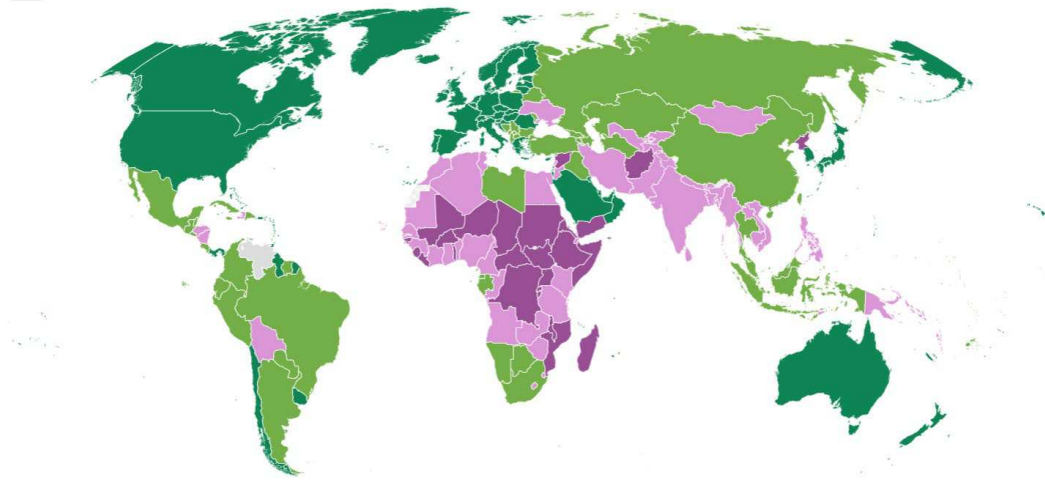
- Continued IASP financial stabilization and growth
- Establish IASP Ethical Review Board
- Concluding SIG Management Task Force
- Continued advancement of GAPPA and Early Career Network
- A 50<sup>th</sup> year “reimagining” of:
  - Congress
  - Membership model

## Pain Management, Research and Education in Low- and Middle-income Settings

World Bank Group country classifications by income level

Year ► ● 2022

■ High Income ■ Upper-middle Income ■ Lower-middle Income ■ Low Income ■ Not Classified



Source: [World Bank Income Classifications FY24](#) • The boundaries, colors, denominations and any other information shown on this map do not imply, on the part of the World Bank Group, any judgment on the legal status of any territory, or any endorsement or acceptance of such boundaries.

### Co-Chairs



**Margarita Calvo**  
*Chile*



**Saurab Sharma**  
*Nepal/Australia*





## Environmental Sustainability

- Assessment of impact and recommending mitigation strategies for:
  - IASP's activities as an organization
  - Clinical practice, research and education activities of IASP members

### Co-Chairs



**Romy Parker**  
*South Africa*



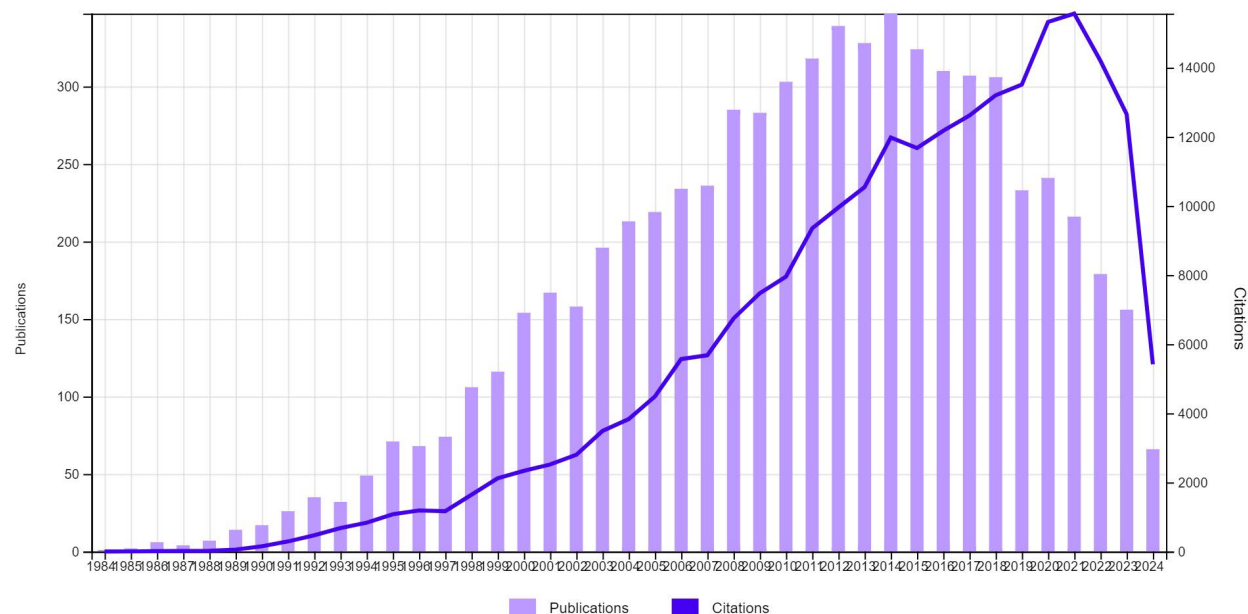
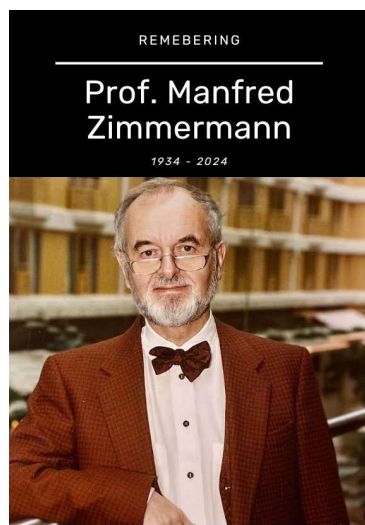
**Johan Vlaeyen**  
*Belgium*

## Guidelines For The Use Of Laboratory Animals In Pain Research

**PAIN**

*Pain*, 16 (1983) 109-110

Ethical Guidelines for Investigations of  
Experimental Pain in Conscious Animals



Co-Chairs



**Anne-Marie Heegaard**  
*Denmark*



**Esther Pogatzki-Zahn**  
*Germany*





**Scientific Programme Committee**

**Chair – Kirsty Bannister**

United Kingdom



**Local Arrangements Committee**

**Chair - Sasikaan Nimmaanrat**

Thailand





[a.rice@imperial.ac.uk](mailto:a.rice@imperial.ac.uk)